



Advanced Software for Seamless 3D Measurement



Multi-scan modes data fusion

The system seamlessly combines wide-range laser scanning for overall structure capture with dynamic tracking for detailed local features, integrating broad



Inspection module

, QWHJUDWHG LQVSHFWLRQ PRGXOH FHUWL)HG E\ 37% reliable, high-quality full-size inspection.



Intelligent resolution

Automatically adjusts mesh resolution based on the object's curvature, ensuring clearer and more detailed features.



AI feature recognition

Intelligent boundary detection enables fast, accurate scanning and measurement of round and square holes, delivering high-accuracy hole data.





FreeProbe 2 (Optional)

FreeProbe 2 paired with the FreeScan Trak Nova, offering a portable, high-precision probing solution for detailed point-based measurements.

With dynamic tracking and wireless probing, it delivers easy, free movement without the need for fixed setups, providing metrology-grade accuracy across various environments and part sizes.



Wireless & Portable



Various Probe Tips



Quick Start with Fast Pairing



Ergonomic Design



Seamless Inspection
Software Integration

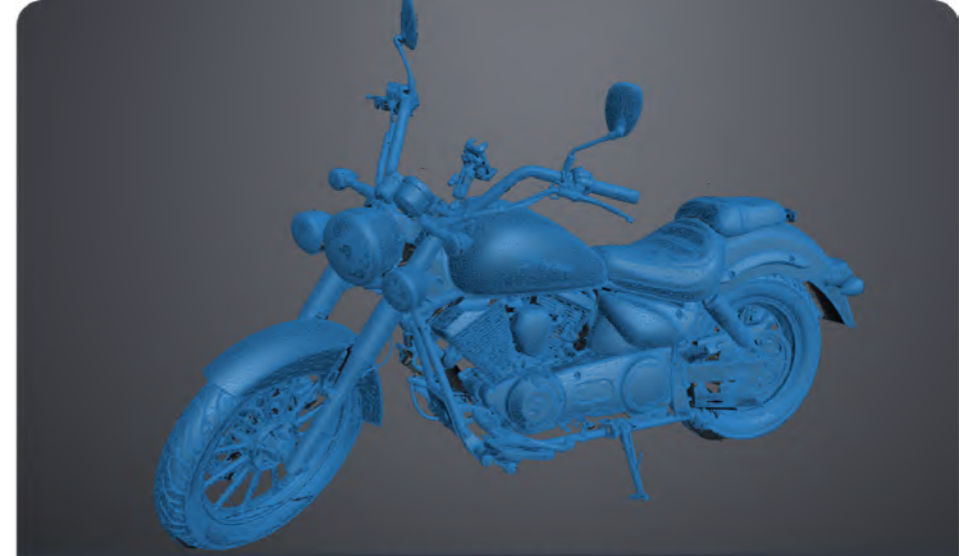




Quality Control



Product Design



Reverse Engineering



Maintenance Repair & Overhaul



Digital Archiving



Archaeology & Heritage Preservation

	FreeScan Trak Nova	FreeScan UE Nova	FreeProbe 2
Volumetric accuracy	0.062 mm (12 m³)	/	0.062 mm (12m³)
Resolution	0.01 ~ 10 mm	0.5 ~ 10 mm	/
Flexible FOV	Up to 2600 x 2200 mm		/
FOV indicator of VPG	Included		/
Detailed scan	Included (7 parallel laser lines)	Included (support near mode)	/
Depth of field	TE Nova: 380 mm (170 ~ 550 mm) UE Nova: 2700 mm (800 ~ 3500 mm)	2300 mm (300 ~ 2600 mm)	/
Net weight	TE Nova:1.2 kg / UE Nova: 1.6 kg		460 g
Certifications	CE, FCC, ROHS, WEEE, KC, FDA, UKCA, IP50, TELEC, TiSAX		/

